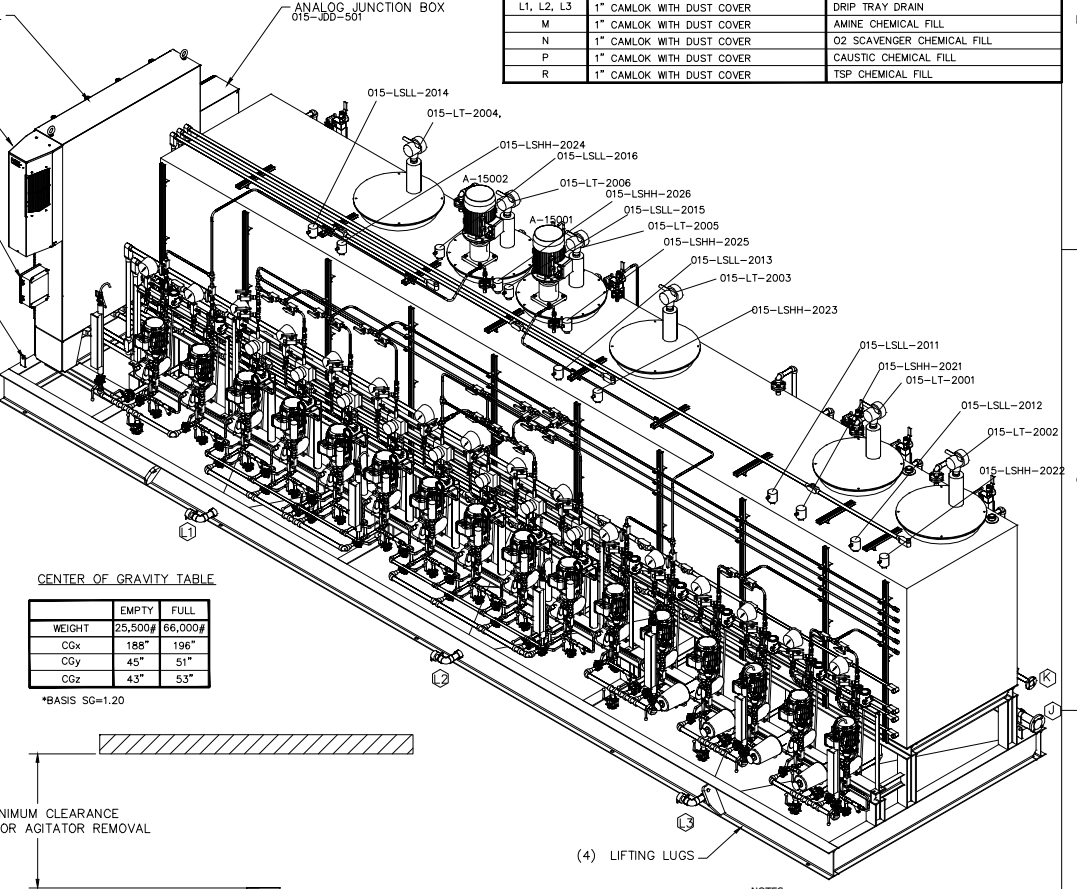
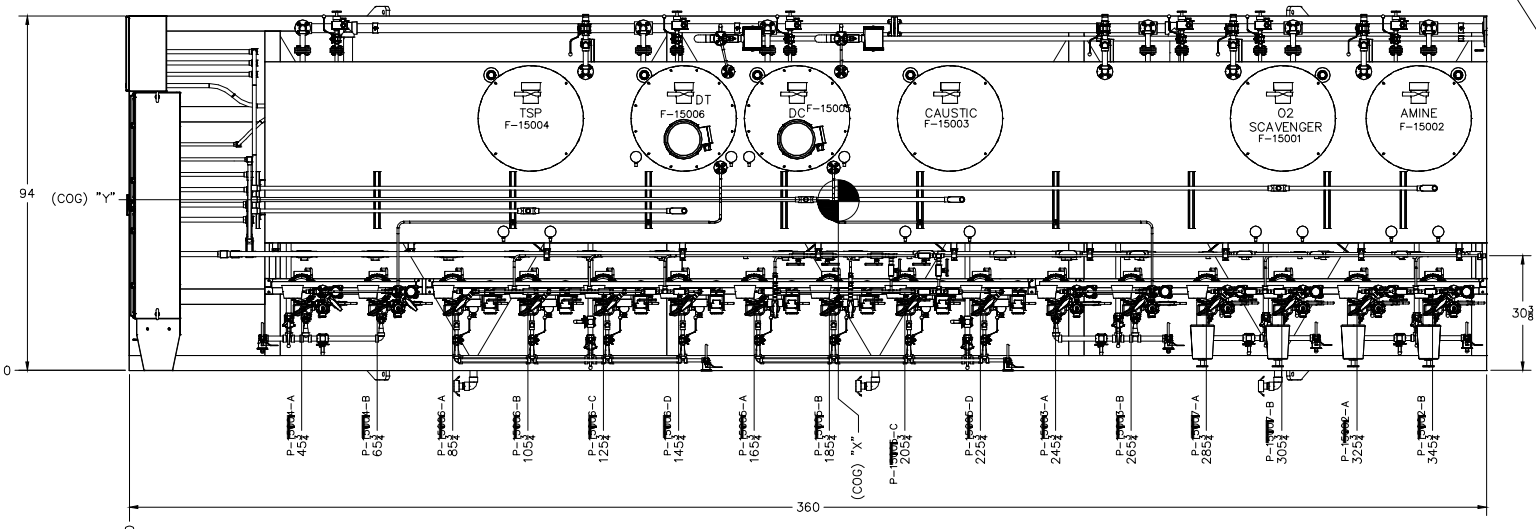


BFW Chemical Feed Package				
Load Condition	Fx (lb)	Fy (lb)	Fz (lb)	Mo (ft x lb)
1. Dead Load	0	0	28,000	97,500
2. Operating Load	0	0	66,000	247,500
3. Wind Load	12,960	3,384	0	-47,000
4. Seismic Load	2,800	2,800	0	-12,750
5. Hydrotest Load	0	0	66,000	N/A

Anchor Bolts: Red Head TruBolt Wedge Anchor, 3/4" x 5-1/2" long, A193 B7 HDG, x10
Overturning = -, Righting = +

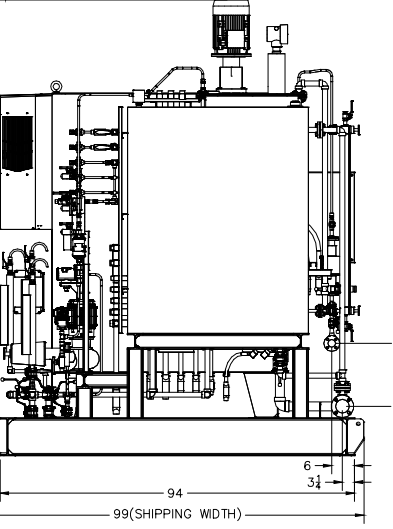
CONNECTION TABLE LIST		
CONNECTION NUMBER	CONNECTION SIZE & TYPE	CONNECTION NAME
A	1/2" OD TUBE COMPRESSION	TP3 BOILER B-14001
B	1/2" OD TUBE COMPRESSION	TP4 F-01001 A/B
C	1/2" OD TUBE COMPRESSION	TP5 F-02001
G	1/2" OD TUBE COMPRESSION	F-01501 TIE IN POINT 1
H	1/2" OD TUBE COMPRESSION	F-01501 TIE IN POINT 2
J	2" 150# RF ANSI FLANGE CONNECTION	TP7 TO WASTE DRAIN
K	1" 150# RF ANSI FLANGE CONNECTION	TP6 DEMINERALIZED WATER INLET
L1, L2, L3	1" CAMLOK WITH DUST COVER	DRIP TRAY DRAIN
M	1" CAMLOK WITH DUST COVER	AMINE CHEMICAL FILL
N	1" CAMLOK WITH DUST COVER	O2 SCAVENGER CHEMICAL FILL
P	1" CAMLOK WITH DUST COVER	CAUSTIC CHEMICAL FILL
R	1" CAMLOK WITH DUST COVER	TSP CHEMICAL FILL



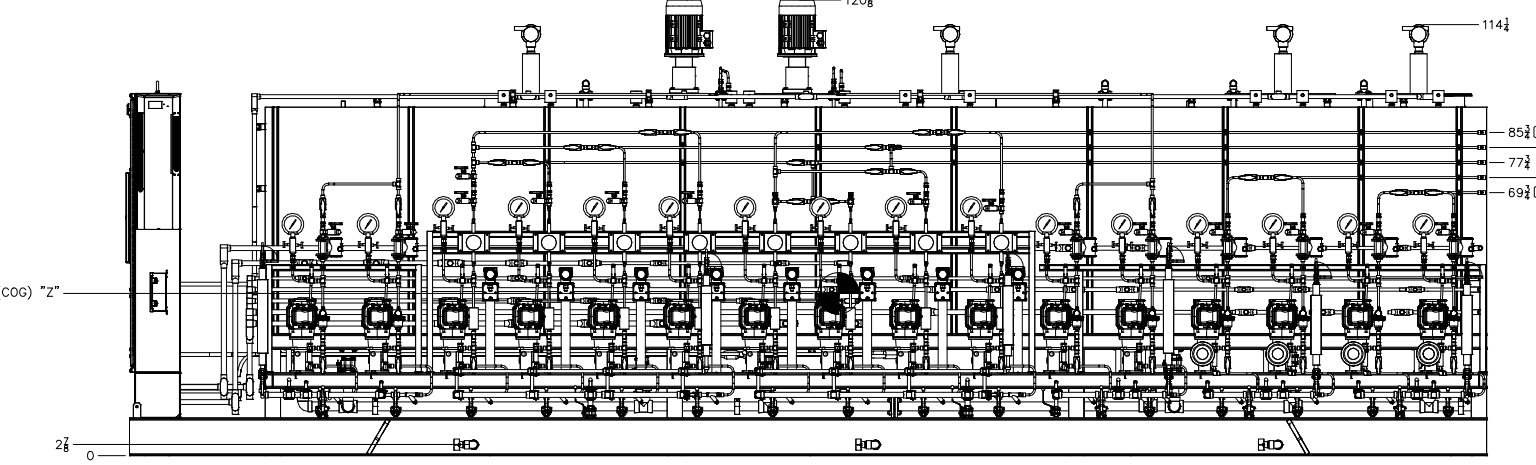
CENTER OF GRAVITY TABLE

	EMPTY	FULL
WEIGHT	25,500#	66,000#
CGx	188"	196"
CGy	45"	51"
CGz	43"	53"

*BASIS SG=1.20



- NOTES:
- UNLESS OTHERWISE SPECIFIED ALL DIMENSIONS ARE IN INCHES.
 - DIMENSIONS ENCLOSED WITHIN PARENTHESES INDICATE REFERENCE.
 - ALL FRAME MATERIAL A-36 CARBON STEEL HOT DIPPED GALVANIZED COATING.
 - SEE PID FOR PIPE MATERIALS.
 - ALLOW 36" CLEARANCE ON THE TOP & ALL SIDES FOR MAINTENANCE ACCESS, UNLESS NOTED OTHERWISE.
 - APPROXIMATE SKID WEIGHT:
DRY: 25,500 LBS
OPERATING: 66,000 LBS
 - PIPE CONNECTIONS +/- 1" IN ALL DIMENSIONS.
 - DO NOT SCALE DRAWING.



Superior Industrial Equipment S15201-201

Scale: Original Size: **D**

OEC project number:

Nomination:

Basic document:

DCC DC DL-No.

CHEMICAL BFW DOSING STATION

Job No. Document No. **69900-PU036Y-151400** Rev. **5**



Rev.	Name	Date	Checked	Approved	Kind of Revision
1	Prepared/Changed				

AR LOUZE CONFIDENTIAL INFORMATION
THIS PRINT IS THE PROPERTY OF AR LOUZE S.A. OR ITS DIRECT AND INDIRECT AFFILIATES OR SUBSIDIARIES AND CONTAINS VALUABLE CONFIDENTIAL INFORMATION, COPYRIGHT AND ALL OTHER RIGHTS IN THIS PRINT AND EXPRESS RESERVING THAT THIS PRINT MAY BE REPRODUCED BY A THIRD PARTY WITHOUT EXPRESS WRITTEN CONSENT OF AR LOUZE S.A. OR ITS DIRECT AND INDIRECT AFFILIATES OR SUBSIDIARIES. THIS PRINT IS LOANED TO YOU FOR YOUR USE ONLY AND IS NOT TO BE REPRODUCED OR TRANSMITTED IN ANY FORM OR BY ANY MEANS, ELECTRONIC OR MECHANICAL, INCLUDING PHOTOCOPYING, RECORDING, OR BY ANY INFORMATION STORAGE AND RETRIEVAL SYSTEM, WITHOUT THE EXPRESS WRITTEN PERMISSION OF AR LOUZE S.A. OR ITS DIRECT AND INDIRECT AFFILIATES OR SUBSIDIARIES.