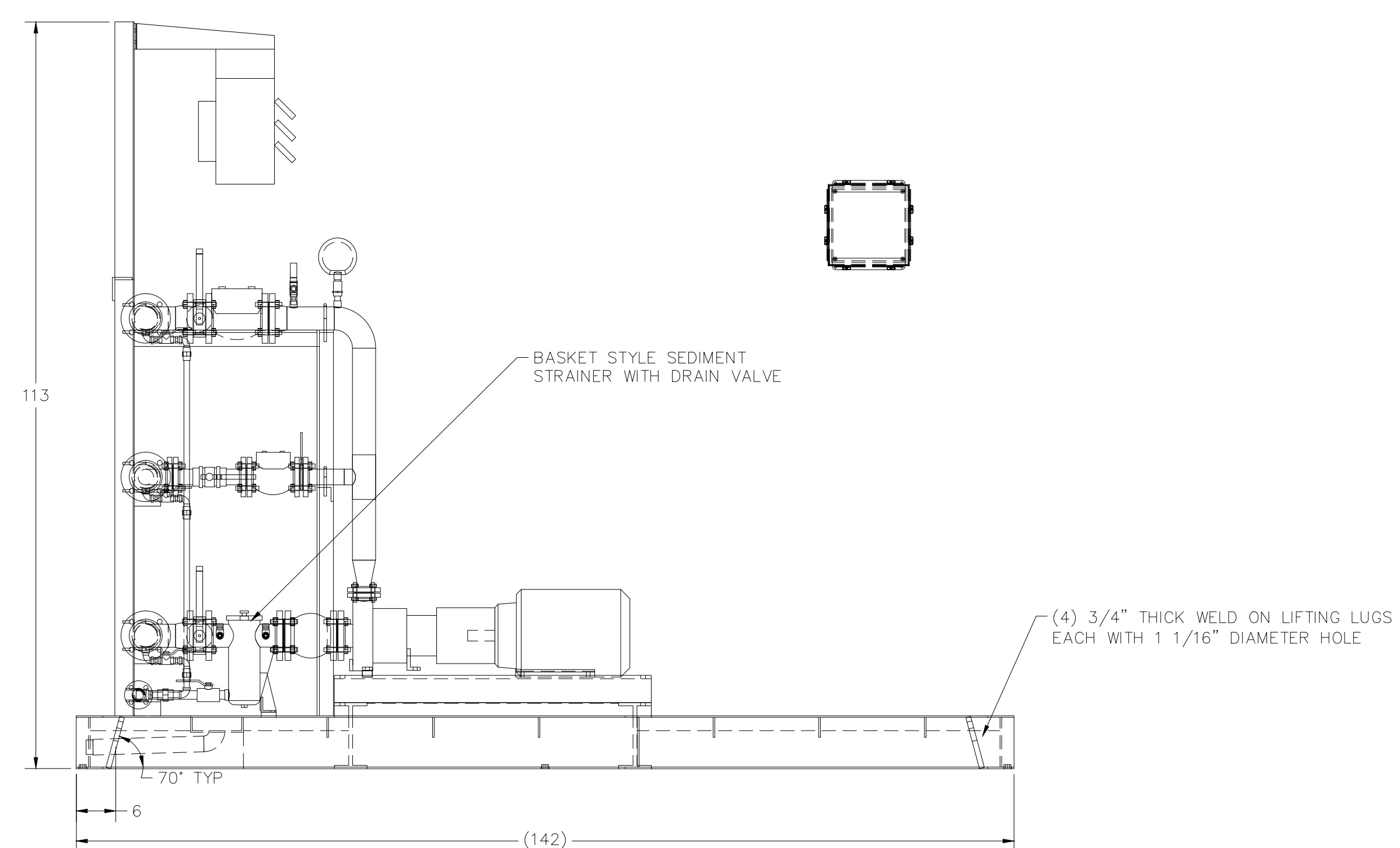
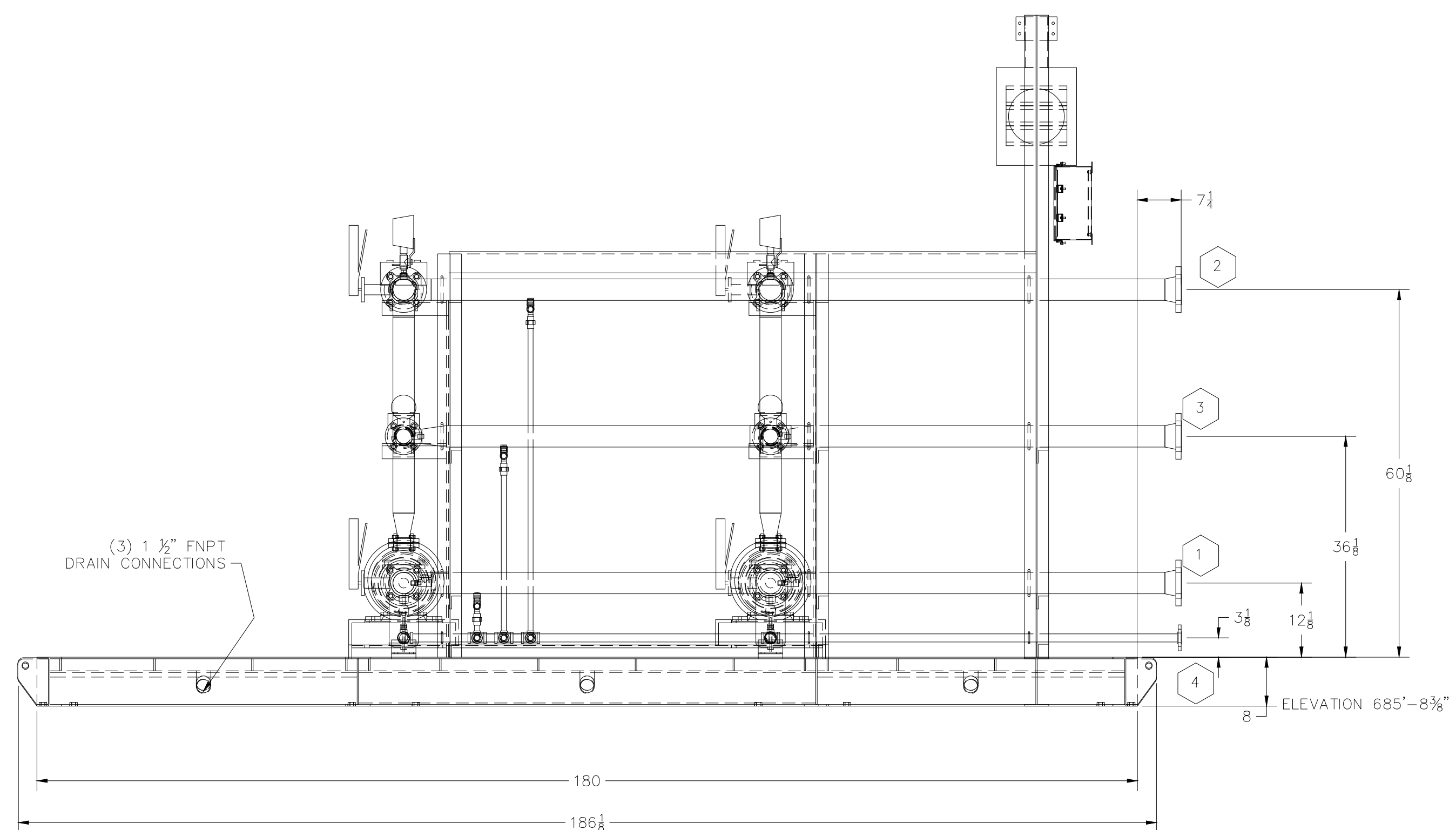
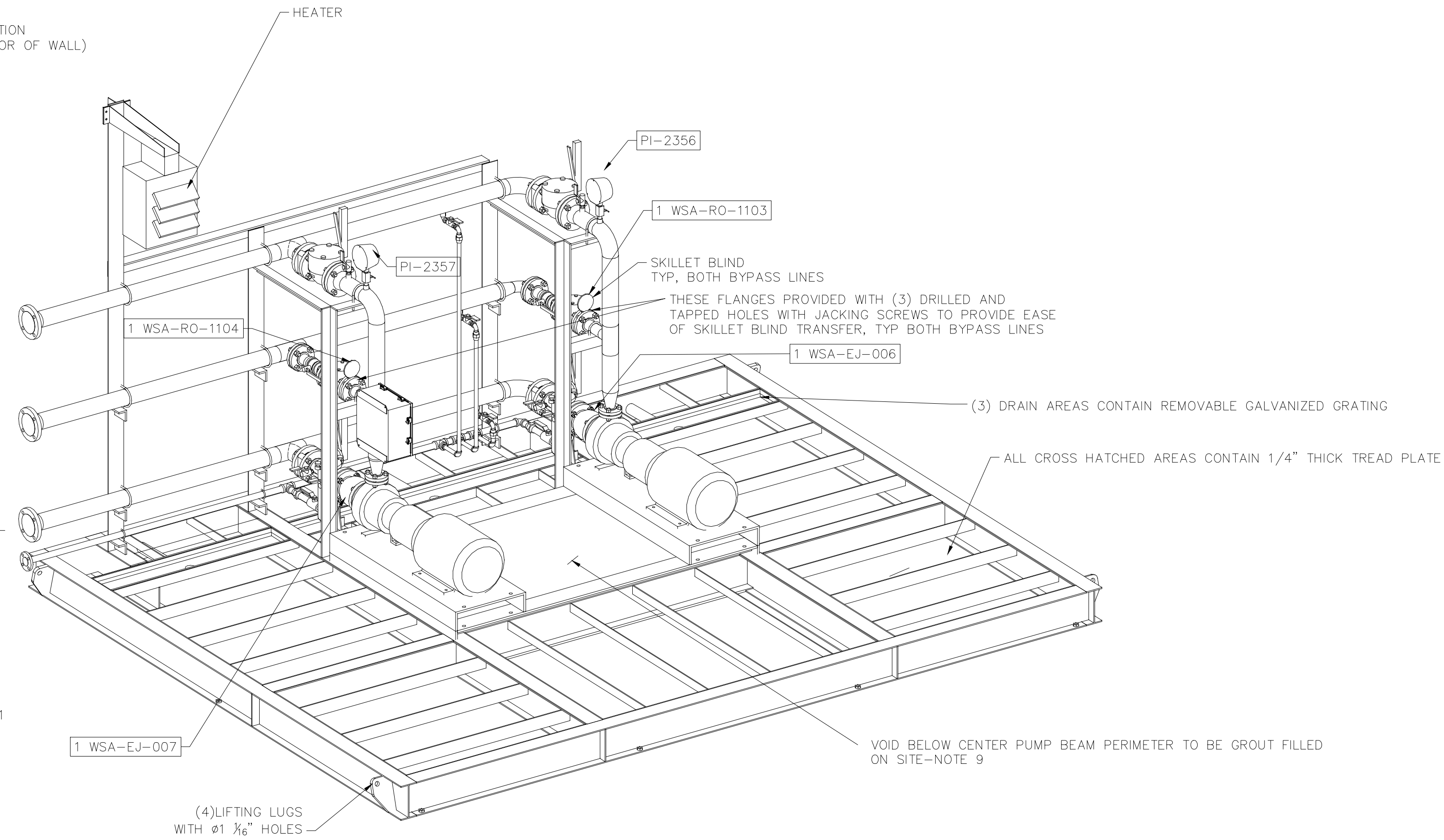
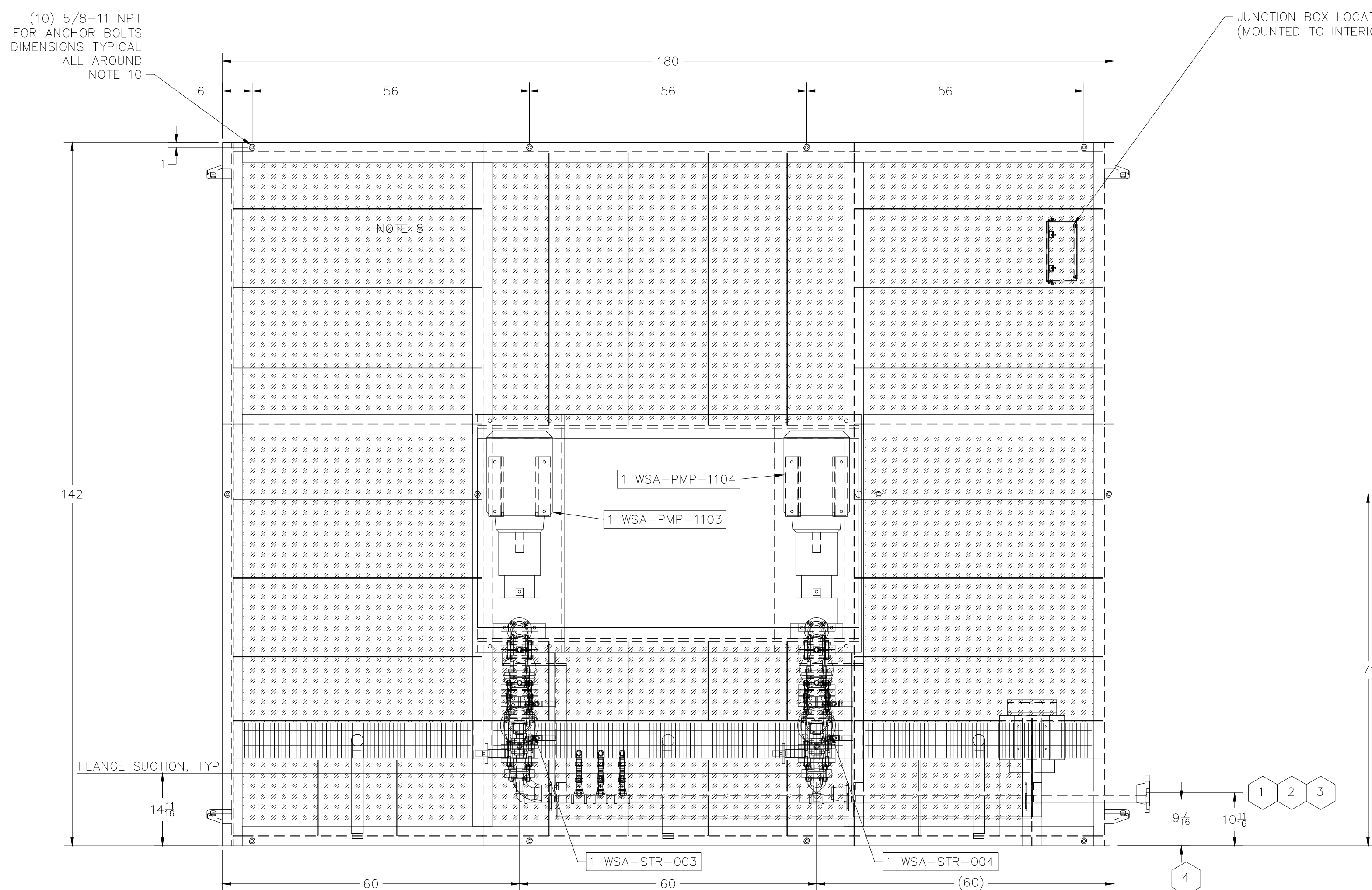


CONNECTION TABLE LIST		
CONNECTION NUMBER	CONNECTION SIZE & TYPE	CONNECTION NAME
1	3" 150# RF ANSI FLANGE	SUCTION MANIFOLD
2	3" 150# RF ANSI FLANGE	DISCHARGE MANIFOLD
3	3" 150# RF ANSI FLANGE	BYPASS DISCHARGE MANIFOLD
4	1" 150# RF ANSI FLANGE	DRAIN MANIFOLD



- NOTES:
- UNLESS OTHERWISE SPECIFIED ALL DIMENSIONS ARE IN INCHES.
 - DIMENSIONS ENCLOSED WITHIN PARENTHESES INDICATE REFERENCE.
 - ALL FRAME MATERIAL A-36 CARBON STEEL RAL 7037 LIGHT GRAY EPOXY COATING. BUILDING INTERIOR SIDING WILL BE TRACHTE WHITE. BUILDING EXTERIOR SIDING, DOORS, AND ALL TRIM WILL BE TRACHTE CHARCOAL GREY.
 - ALL PIPE CARBON STEEL.
 - DIMENSIONAL TOLERANCE $\pm 1/2"$
 - APPROXIMATE SKID WEIGHT: 14,040 LB
 - DO NOT SCALE DRAWING.
 - MINIMUM 42" DISTANCE TO INTERIOR WALL OF ENCLOSURE.
 - LEVEL SKID TO $.001"/FT$, MAX DEVIATION $.005"$. ALIGN PUMPS PRIOR TO GROUTING. VERIFY ALIGNMENT AFTER GROUTING.
 - JACK SCREW AND ANCHOR BOLT LOCATIONS.

DO NOT SCALE DRAWING!

REV	DESCRIPTION	DATE	BY	CHK'D	TOLERANCES ON DIMENSIONS ARE AS FOLLOWS EXCEPT FOR BASIC DIMENSIONS, MAT'L STOCK SIZES AND TOLERANCES SPECIFIED OTHERWISE.	DATE	BY	CHK'D	PROJECT	SHEET	OF
B	ADDED BUILDING FINISHES AND GRADE ELEVATION	14NOV12	SV	KB	ONE DECIMAL	14NOV12	SV	KB	CONTRACT 5.2190 SKID GENERAL ARRANGEMENT	1	1
A	REVISED AND RESUBMITTED/COMMENTS	14NOV12	SV	KB	TWO DECIMALS	02AUG12	SV	KB			
0	RELEASED FOR APPROVAL	02AUG12	SV	KB	THREE DECIMALS						
					ANGULAR DIMENSIONS						
					MATERIAL STOCK SIZE TOLERANCES SHALL CONFORM TO APPLICABLE STANDARD MILL VALUES UNLESS COVERED WITHIN A SPECIFIED MATERIAL SPECIFICATION						
					GEOMETRIC SYMBOLOLOGY PER ANSI Y14.5						

SUPERIOR INDUSTRIAL EQUIPMENT COMPANY

CONTRACT 5.2190 SKID GENERAL ARRANGEMENT

DATE: 02AUG12

SHEET: 1 OF 1

PROJECT: DM12076-201