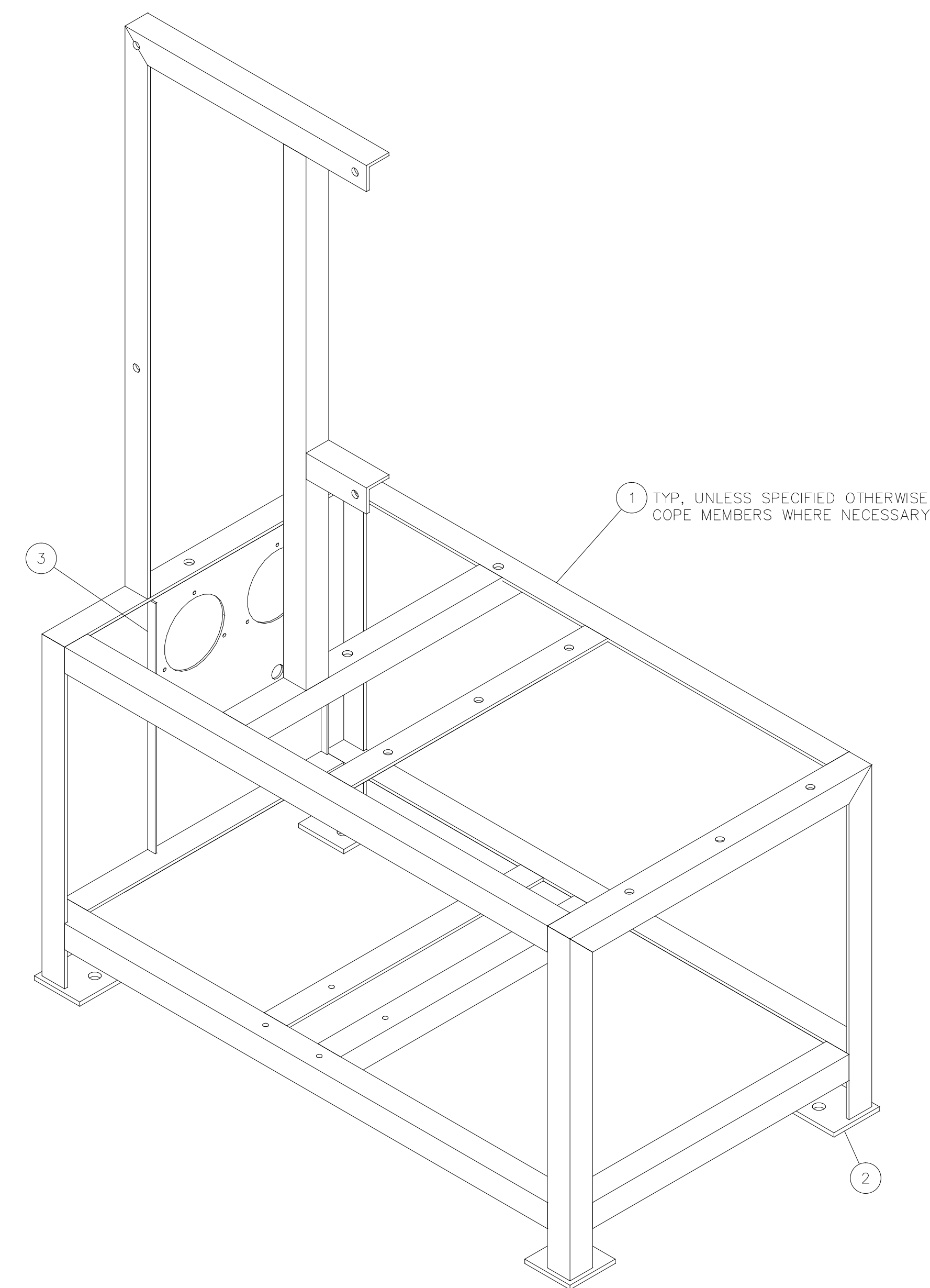
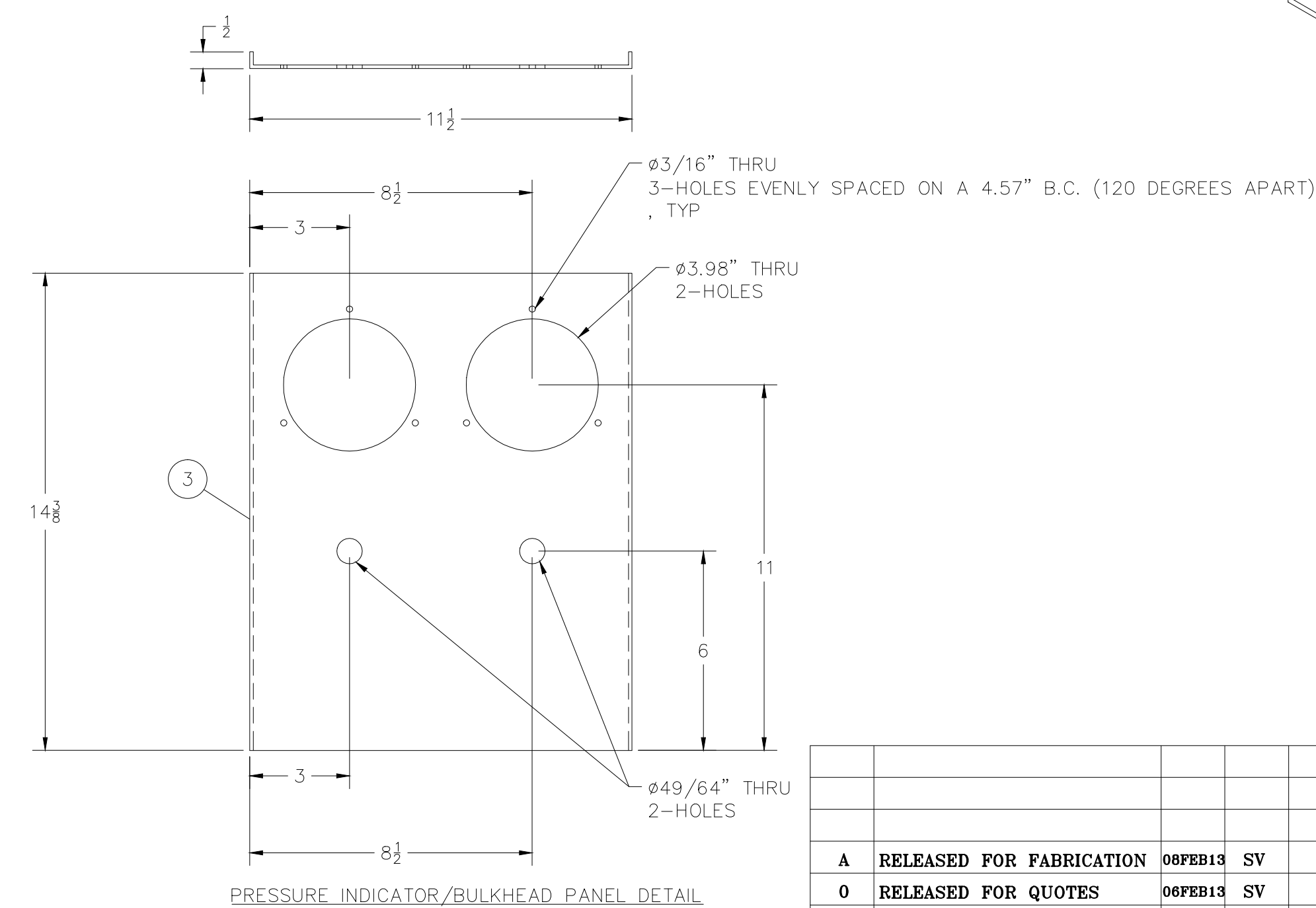
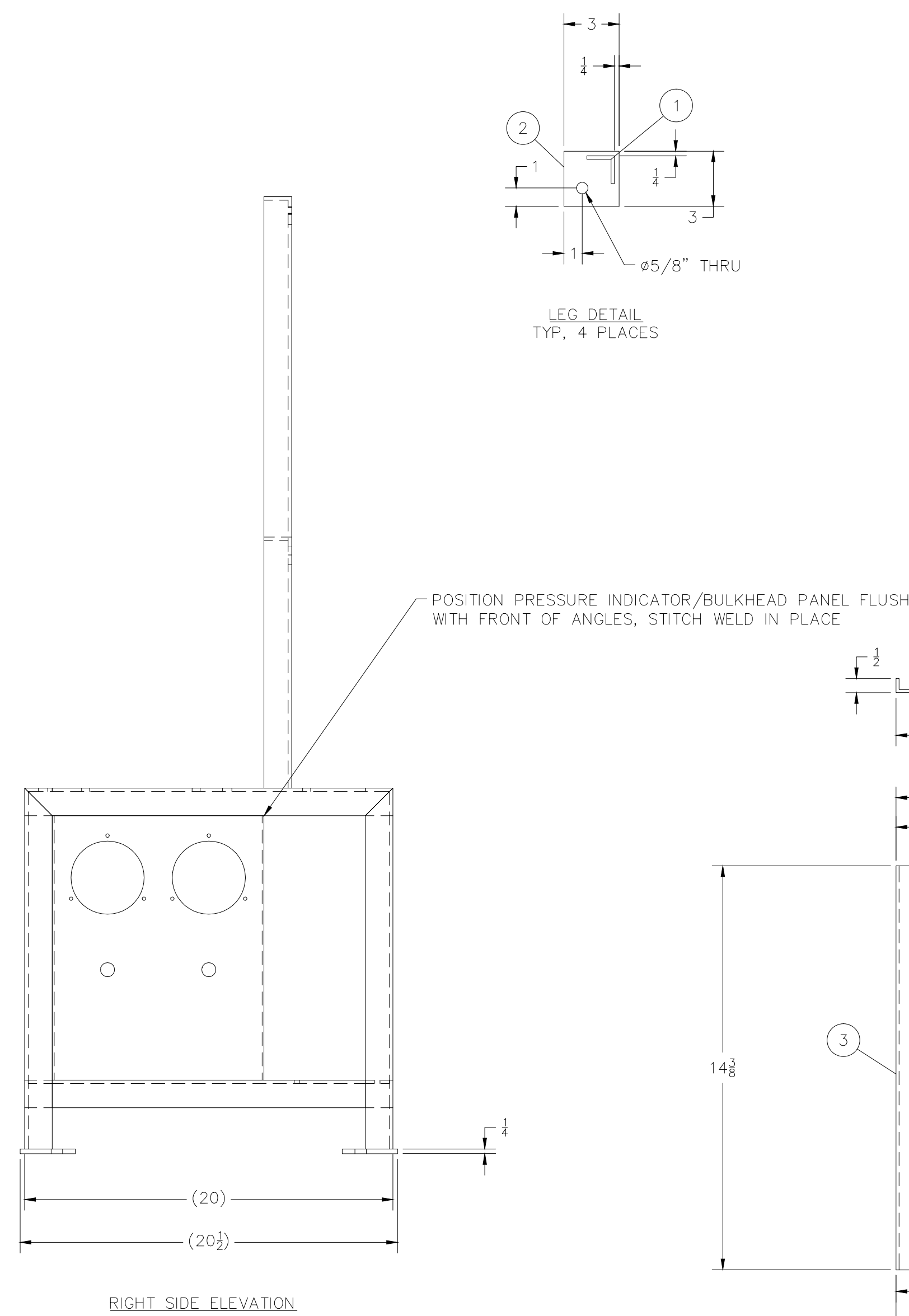
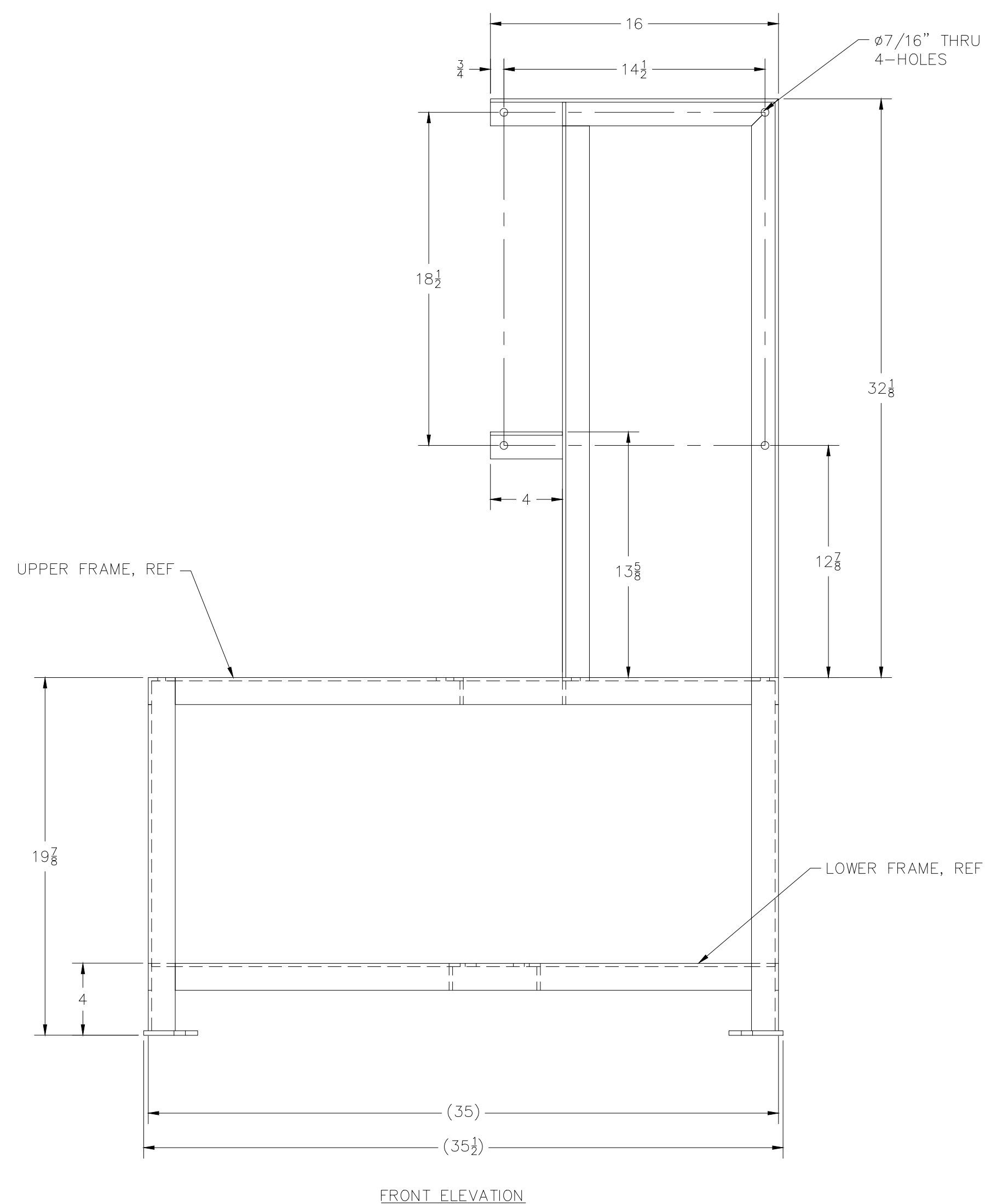
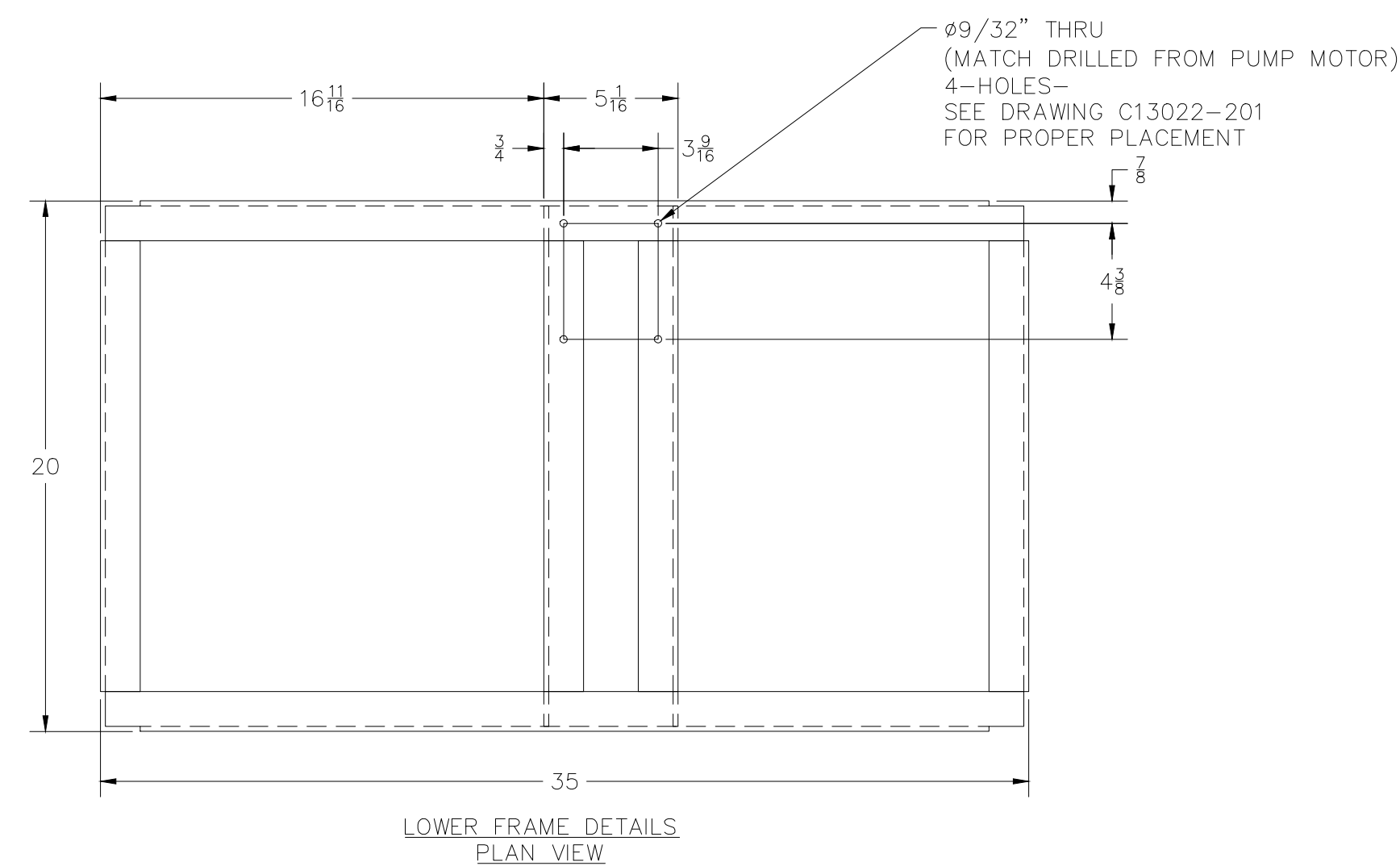
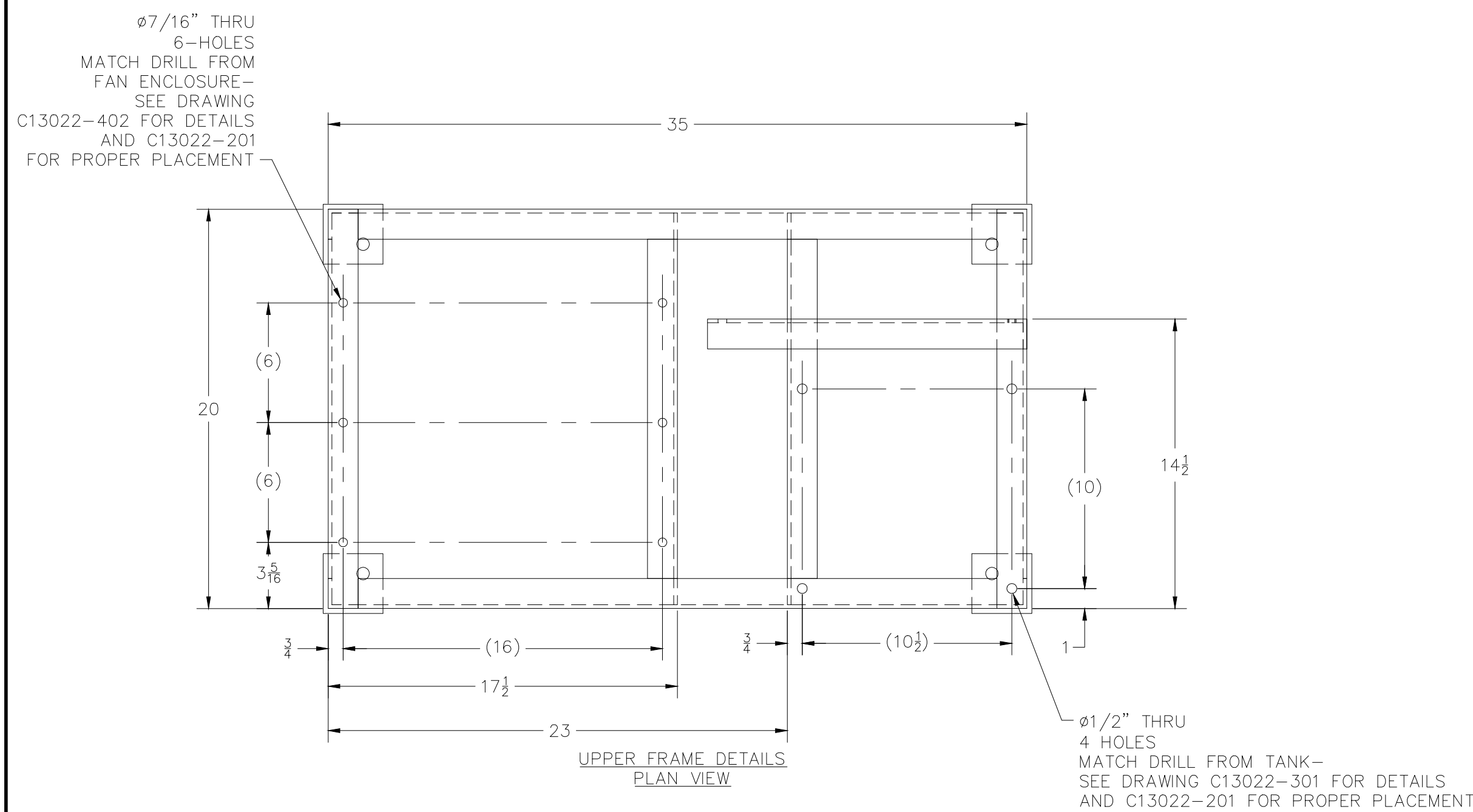


BILL OF MATERIAL

ITEM	QTY	MATL SPEC:	DESCRIPTION	NOTES
1	30#	A36	1 1/2"x1 1/2"x3/16" ANGLE, CUT TO LENGTH (TYPICAL STRUCTURE)	
2	4	A36	1/4"x3" FLAT BAR, 3" LG	
1	1	A36	10 GA, SHEARED TO 12 1/2" x 14 3/8", FORMED PER DETAIL	



NOTES:

- UNLESS OTHERWISE SPECIFIED ALL DIMENSIONS ARE IN INCHES.
- DIMENSIONS ENCLOSED WITHIN PARENTHESES INDICATE REFERENCE.
- DO NOT SCALE DRAWING.
- ALL WELDS TO BE SEAL WELDED TO 1/8" CONTINUOUS FILLET.
- GRIND ALL EDGES TO MILL EDGE RADIUS (IE. SAW CUT EDGES - GRIND SO NOT SHARP). GRIND CORNERS TO 1/4" RADIUS.
- ALL HOLES AND SLOTS TO BE DEBURRED.
- CAP ALL OPEN TUBE ENDS.
- NO PAINT
- DO NOT SCALE DRAWING.

REV	DESCRIPTION	DATE	BY	CHK'D	DATE	BY	CHK'D
A	RELEASED FOR FABRICATION	08FEB13	SV	KB	06FEB13	1	1
O	RELEASED FOR QUOTES	06FEB13	SV	KB			

TOLERANCES ON DIMENSIONS ARE AS FOLLOWS EXCEPT FOR BASIC DIMENSIONS, MAT'L STOCK SIZES AND TOLERANCES SPECIFIED OTHERWISE:
 ONE DECIMAL _____
 TWO DECIMALS _____
 THREE DECIMALS _____
 ANGULAR DIMENSIONS _____
 CAST DIMENSIONS _____

MATERIAL STOCK SIZE TOLERANCES SHALL CONFORM TO APPLICABLE STANDARD MILL VALUES UNLESS COVERED WITHIN A SPECIFIED MATERIAL SPECIFICATION GEOMETRIC SYMBOLOLOGY PER ANSI Y14.5

SUPERIOR INDUSTRIAL EQUIPMENT COMPANY
 PLAN 53 SEAL COOLER SKID BASEFRAME ASSEMBLY

DATE: 06FEB13
 SHEET: 1 OF 1
 TITLE: C13022-401